

B0B36DBS, BD6B36DBS: **Database Systems**

<http://www.ksi.mff.cuni.cz/~svoboda/courses/172-B0B36DBS/>

Lecture 12

Modern Trends

Martin Svoboda

martin.svoboda@fel.cvut.cz

22. 5. 2018

Czech Technical University in Prague, Faculty of Electrical Engineering

Lecture Outline

Big Data

- Characteristics
- Current trends

NoSQL databases

- Motivation
- Features

Overview of NoSQL database types

- **Key-value, wide column, document, graph, ...**

Relational Databases

Data model

Instance \rightarrow **database** \rightarrow **table** \rightarrow **row**

Query languages

- Real-world: **SQL** (*Structured Query Language*)
- Formal: **Relational algebra**, relational calculi (domain, tuple)

Query patterns

- **Selection** based on complex conditions, **projection**, **joins**, **aggregation**, derivation of new values, recursive queries, ...

Representatives

- Oracle Database, Microsoft SQL Server, IBM DB2
- MySQL, PostgreSQL

Relational Databases

Representatives



Relational Databases

Features: Normal Forms

Model

- Functional dependencies
- 1NF, 2NF, 3NF, BCNF (Boyce-Codd normal form)

Objective

- **Normalization of database schema** to BCNF or 3NF
- Algorithms: decomposition or synthesis

Motivation

- Diminish **data redundancy**, prevent update anomalies
- However:
 - Data is scattered into small pieces (high granularity), and so
 - these pieces have to be joined back together when querying!

Relational Databases

Features: Transactions

Model

- **Transaction** = flat sequence of database operations (READ, WRITE, COMMIT, ABORT)

Objectives

- Enforcement of ACID properties
- **Efficient parallel / concurrent execution** (slow hard drives, ...)

ACID properties

- Atomicity – partial execution is not allowed (all or nothing)
- Consistency – transactions turn one valid database state into another
- Isolation – uncommitted effects are concealed among transactions
- Durability – effects of committed transactions are permanent

What is Big Data?

Buzzword? Bubble? Gold rush? Revolution?



Dan Ariely:

Big Data is like teenage sex: **everyone talks about it, nobody really knows how to do it, everyone thinks everyone else is doing it, so everyone claims they are doing it.**

What is Big Data?

No standard definition

- Gartner (*research and advisory company*):
High Performance Computing

Big Data is **high volume**, **high velocity**, and/or **high variety** information assets that require **new forms of processing** to enable enhanced decision making, insight discovery and process optimization.

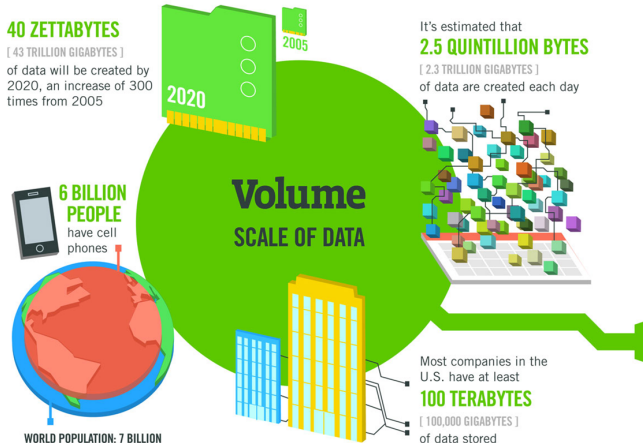
Where is Big Data?

Sources of Big Data

- **Social media and networks**
 - ...all of us are generating data
- **Scientific instruments**
 - ...collecting all sorts of data
- **Mobile devices**
 - ...tracking all objects all the time
- **Sensor technology and networks**
 - ...measuring all kinds of data

Big Data Characteristics

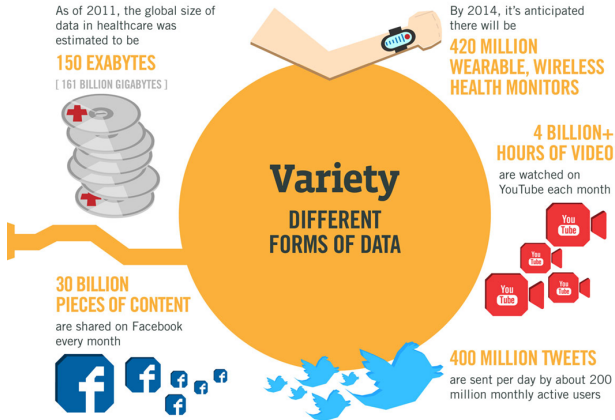
Volume (Scale)



Source: <http://www.ibmbigdatahub.com/>

Big Data Characteristics

Variety (Complexity)

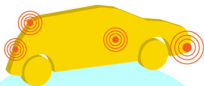


Source: <http://www.ibmbigdatahub.com/>

Big Data Characteristics

Velocity (Speed)

The New York Stock Exchange captures
1 TB OF TRADE INFORMATION
during each trading session



Modern cars have close to
100 SENSORS
that monitor items such as
fuel level and tire pressure

Velocity
ANALYSIS OF
STREAMING DATA

By 2016, it is projected
there will be

**18.9 BILLION
NETWORK
CONNECTIONS**

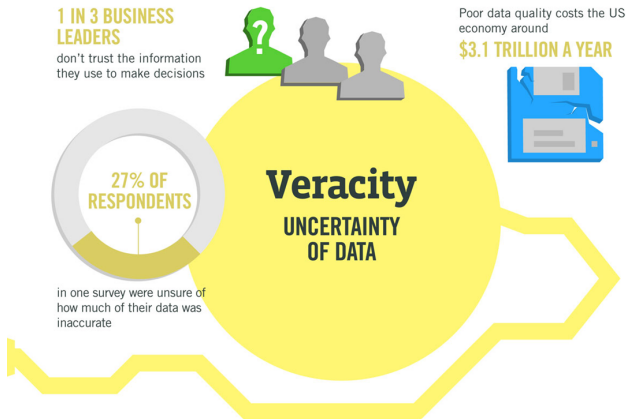
— almost 2.5 connections
per person on earth



Source: <http://www.ibmbigdatahub.com/>

Big Data Characteristics

Veracity (Uncertainty)



Source: <http://www.ibmbigdatahub.com/>

Big Data Characteristics

Basic 4V

- **Volume** (Scale)
 - Data volume is increasing exponentially, not linearly
 - Even large amounts of small data can result into Big Data
- **Variety** (Complexity)
 - Various formats, types, and structures
(from semi-structured XML to unstructured multimedia)
- **Velocity** (Speed)
 - Data is being generated fast and needs to be processed fast
- **Veracity** (Uncertainty)
 - Uncertainty due to inconsistency, incompleteness, latency, ambiguities, or approximations

Big Data Characteristics

Additional V

- **Value**
 - Business value of the data (needs to be revealed)
- **Validity**
 - Data correctness and accuracy with respect to the intended use
- **Volatility**
 - Period of time the data is valid and should be maintained

Current Trends

Big Data

- **Volume:** terabytes → zettabytes
- **Variety:** structured → structured and unstructured data
- **Velocity:** batch processing → streaming data
- ...

Big users

- Population online, hours spent online, devices online, ...
- Rapidly growing companies / web applications
 - Even millions of users within a few months

Current Trends

Everything is in **cloud**

- **SaaS**: Software as a Service
- **PaaS**: Platform as a Service
- **IaaS**: Infrastructure as a Service

Processing paradigms

- **OLTP**: Online Transaction Processing
- **OLAP**: Online Analytical Processing
- *...but also...*
- **RTAP**: Real-Time Analytical Processing

Current Trends

Data assumptions

- **Data format** is becoming unknown or inconsistent
- Linear growth → **unpredictable exponential growth**
- **Read requests** often prevail **write requests**
- Data updates are no longer frequent
- Data is expected to be replaced
- Strong **consistency** is no longer mission-critical

Current Trends

⇒ **New approach is required**

- Relational databases simply do not follow the current trends

Key technologies

- Distributed **file systems**
- **MapReduce** and other programming models
- Grid computing, cloud computing
- **NoSQL databases**
- Data warehouses
- Large scale machine learning

NoSQL Databases

What does **NoSQL** actually mean?

A bit of history ...

- 1998
 - First used for a relational database that omitted usage of SQL
- 2009
 - First used during a conference to advocate non-relational databases

So?

- Not: *no to SQL*
- Not: *not only SQL*
- NoSQL is an **accidental term with no precise definition**

NoSQL Databases

What does **NoSQL** actually mean?

NoSQL movement = The whole point of **seeking alternatives** is that you need to solve a problem that **relational databases are a bad fit for**

NoSQL databases = Next generation databases mostly addressing some of the points: being **non-relational, distributed, open-source** and **horizontally scalable**. The original intention has been modern web-scale databases. Often more characteristics apply as: **schema-free, easy replication support, simple API, eventually consistent, a huge data amount**, and more.

Source: <http://nosql-database.org/>

Types of NoSQL Databases

Core types

- **Key-value** stores
- **Wide column** (column family, column oriented, ...) stores
- **Document** stores
- **Graph** databases

Non-core types

- **Object** databases
- Native **XML** databases
- **RDF** stores
- ...

Key-Value Stores

Data model

- The most simple NoSQL database type
 - Works as a simple hash table (mapping)
- **Key-value pairs**
 - **Key** (id, identifier, primary key)
 - **Value**: binary object, black box for the database system

Query patterns

- Create, update or remove value for a given key
- **Get value** for a given key

Characteristics

- Simple model \Rightarrow **great performance, easily scaled, ...**
- Simple model \Rightarrow **not for complex queries nor complex data**

Key-Value Stores

Suitable use cases

- Session data, user profiles, user preferences, shopping carts, ...
 - I.e. **when values are only accessed via keys**

When not to use

- **Relationships among entities**
- Queries requiring **access to the content of the value part**
- **Set operations** involving multiple key-value pairs

Representatives

- **Redis, MemcachedDB, Riak KV**, Hazelcast, Ehcache, Amazon SimpleDB, Berkeley DB, Oracle NoSQL, Infinispan, LevelDB, Ignite, Project Voldemort
- *Multi-model*: OrientDB, ArangoDB

Key-Value Stores

Representatives



redis



hazelcast



EHCACHE

◁EROSPIKE



SimpleDB

ORACLE®

BERKELEY DB



ArangoDB

Wide Column Stores

Data model

- **Column family** (table)
 - Table is a collection of **similar rows** (not necessarily identical)
- **Row**
 - Row is a collection of **columns**
 - Should encompass a group of data that is accessed together
 - Associated with a unique **row key**
- **Column**
 - Column consists of a **column name** and **column value** (and possibly other metadata records)
 - Scalar values, but also **flat sets, lists or maps** may be allowed

Wide Column Stores

Query patterns

- Create, update or remove a row within a given column family
- **Select rows according to a row key or simple conditions**

Warning

- Wide column stores are not just a special kind of RDBMSs with a variable set of columns!

Wide Column Stores

Suitable use cases

- Event logging, content management systems, blogs, ...
 - I.e. for **structured flat data with similar schema**

When not to use

- **ACID transactions** are required
- **Complex queries**: aggregation (SUM, AVG, ...), joining, ...
- Early prototypes: i.e. when **database design may change**

Representatives

- Apache **Cassandra**, Apache **HBase**, Apache Accumulo, Hypertable, **Google Bigtable**

Wide Column Stores

Representatives



Document Stores

Data model

- **Documents**
 - Self-describing
 - **Hierarchical tree structures** (JSON, XML, ...)
 - Scalar values, maps, lists, sets, nested documents, ...
 - Identified by a **unique identifier** (key, ...)
- Documents are **organized into collections**

Query patterns

- Create, update or remove a document
- **Retrieve documents according to complex query conditions**

Observation

- Extended key-value stores where the value part is examinable!

Document Stores

Suitable use cases

- Event logging, content management systems, blogs, web analytics, e-commerce applications, ...
 - I.e. **for structured documents with similar schema**

When not to use

- **Set operations** involving multiple documents
- Design of document structure is constantly changing
 - I.e. when the required level of granularity would outbalance the advantages of aggregates

Document Stores

Representatives

- **MongoDB, Couchbase**, Amazon **DynamoDB**, **CouchDB**, RethinkDB, RavenDB, Terrastore
- *Multi-model*: **MarkLogic**, **OrientDB**, OpenLink Virtuoso, ArangoDB

Document Stores

Representatives



Graph Databases

Data model

- **Property graphs**
 - **Directed / undirected graphs**, i.e. collections of ...
 - **nodes** (vertices) for real-world entities, and
 - **relationships** (edges) between these nodes
 - Both the nodes and relationships can be associated with additional **properties**

Types of databases

- **Non-transactional** = small number of very large graphs
- **Transactional** = large number of small graphs

Graph Databases

Query patterns

- Create, update or remove a node / relationship in a graph
- **Graph algorithms** (shortest paths, spanning trees, ...)
- General **graph traversals**
- **Sub-graph** queries or **super-graph** queries
- Similarity based queries (approximate matching)

Representatives

- **Neo4j**, **Titan**, Apache Giraph, InfiniteGraph, FlockDB
- *Multi-model*: **OrientDB**, OpenLink **Virtuoso**, **ArangoDB**

Graph Databases

Suitable use cases

- Social networks, routing, dispatch, and location-based services, recommendation engines, chemical compounds, biological pathways, linguistic trees, ...
 - I.e. simply **for graph structures**

When not to use

- **Extensive batch operations** are required
 - Multiple nodes / relationships are to be affected
- **Only too large graphs** to be stored
 - Graph distribution is difficult or impossible at all

Graph Databases

Representatives



Native XML Databases

Data model

- **XML documents**
 - Tree structure with nested **elements**, **attributes**, and text values (beside other less important constructs)
 - Documents are organized into collections

Query languages

- **XPath**: *XML Path Language* (navigation)
- **XQuery**: *XML Query Language* (querying)
- **XSLT**: *XSL Transformations* (transformation)

Representatives

- **Sedna**, **Tamino**, BaseX, eXist-db
- *Multi-model*: **MarkLogic**, OpenLink **Virtuoso**

Native XML Databases

Representatives



RDF Stores

Data model

- **RDF triples**
 - Components: **subject**, **predicate**, and **object**
 - Each triple represents a **statement** about a real-world entity
- Triples can be viewed as **graphs**
 - **Vertices** for subjects and objects
 - **Edges** directly correspond to individual statements

Query language

- **SPARQL**: *SPARQL Protocol and RDF Query Language*

Representatives

- Apache **Jena**, **rdf4j** (Sesame), Algebraix
- *Multi-model*: **MarkLogic**, OpenLink **Virtuoso**

RDF Stores

Representatives



Features of NoSQL Databases

Data model

- Traditional approach: relational model
- (New) possibilities:
 - **Key-value, document, wide column, graph**
 - Object, XML, RDF, ...
- Goal
 - Respect the real-world nature of data
(i.e. data structure and mutual relationships)

Features of NoSQL Databases

Aggregate structure

- **Aggregate** definition
 - Data unit with a complex structure
 - **Collection of related data pieces we wish to treat as a unit** (with respect to data manipulation and data consistency)
- Examples
 - **Value** part of key-value pairs in key-value stores
 - **Document** in document stores
 - **Row** of a **column family** in wide column stores

Features of NoSQL Databases

Aggregate structure

- Types of systems
 - **Aggregate-ignorant**: relational, graph
 - It is not a bad thing, it is a feature
 - **Aggregate-oriented**: key-value, document, wide column
- Design notes
 - No universal strategy how to draw **aggregate boundaries**
 - **Atomicity** of database operations:
just a single aggregate at a time

Features of NoSQL Databases

Elastic scaling

- Traditional approach: **scaling-up**
 - Buying bigger servers as database load increases
- New approach: **scaling-out**
 - Distributing database data across multiple hosts
 - Graph databases (unfortunately): difficult or impossible at all

Data distribution

- **Sharding**
 - Particular ways how database data is split into separate groups
- **Replication**
 - Maintaining several data copies (performance, recovery)

Features of NoSQL Databases

Automated processes

- Traditional approach
 - Expensive and highly trained database administrators
- New approach: **automatic recovery, distribution, tuning, ...**

Relaxed consistency

- Traditional approach
 - **Strong consistency** (ACID properties and transactions)
- New approach
 - **Eventual consistency** only (BASE properties)
 - I.e. we have to make trade-offs because of the data distribution

Features of NoSQL Databases

Schemalessness

- Relational databases
 - Database schema present and **strictly enforced**
- NoSQL databases
 - **Relaxed schema** or **completely missing**
 - Consequences: **higher flexibility**
 - Dealing with **non-uniform data**
 - **Structural changes** cause no overhead
 - However: there is (usually) an **implicit schema**
 - We must know the data structure at the application level anyway

Features of NoSQL Databases

Open source

- Often community and enterprise versions (with extended features or extent of support)

Simple APIs

- Often state-less application interfaces (HTTP)

Features of NoSQL Databases

Current State: Five advantages

- **Scaling**
 - Horizontal distribution of data among hosts
- **Volume**
 - High volumes of data that cannot be handled by RDBMS
- **Administrators**
 - No longer needed because of the automated maintenance
- **Economics**
 - Usage of cheap commodity servers, lower overall costs
- **Flexibility**
 - Relaxed or missing data schema, easier design changes

Features of NoSQL Databases

Current State: Five challenges

- **Maturity**
 - Often still in pre-production phase with key features missing
- **Support**
 - Mostly open source, limited sources of credibility
- **Administration**
 - Sometimes relatively difficult to install and maintain
- **Analytics**
 - Missing support for business intelligence and ad-hoc querying
- **Expertise**
 - Still low number of NoSQL experts available in the market

Conclusion

The end of relational databases?

- Certainly no
 - They are still suitable for most projects
 - Familiarity, stability, feature set, available support, ...
- However, we should also consider different database models and systems
 - **Polyglot persistence** = **usage of different data stores in different circumstances**

Lecture Conclusion

Big Data

- 4V characteristics: volume, variety, velocity, veracity

NoSQL databases

- (New) **logical models**
 - Core: key-value, wide column, document, graph
 - Non-core: XML, RDF, ...
- (New) **principles and features**
 - Horizontal scaling, data sharding and replication, eventual consistency, ...